

Technical Data Sheet

Product Code:

MC106 Range

Product Description:

106mm high steel wire cable tray
50 x 100 mm mesh configuration

Product Dimensions:

MC106100 - 106 x 100 mm
MC106150 - 106 x 150 mm
MC106200 - 106 x 200 mm
MC106300 - 106 x 300 mm
MC106400 - 106 x 400 mm
MC106450 - 106 x 450 mm
MC106500 - 106 x 500 mm
MC106600 - 106 x 600 mm

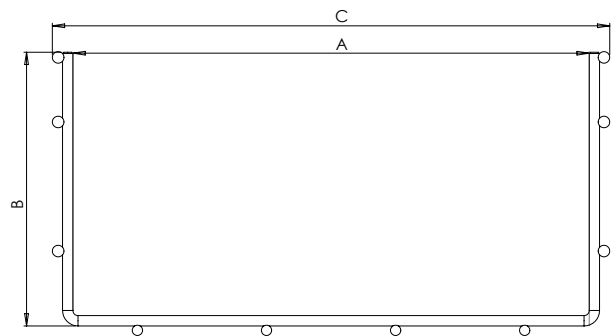
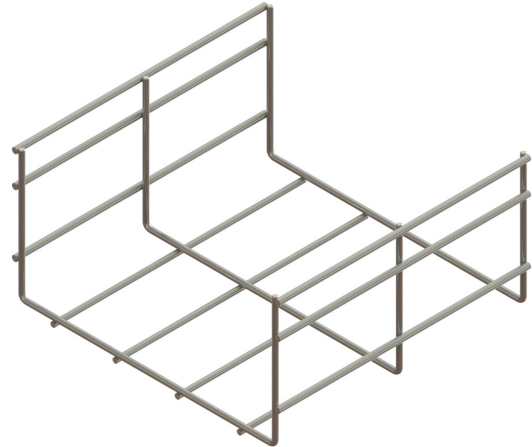
Standard 3 metres length

Applicable Standards:

BS EN 61537 (Cable tray systems)
BS EN ISO 10244 (Steel wire and wire products)
BS EN ISO 1461 (Hot dip galvanized coatings)
BS EN ISO 2081 (Metallic and other inorganic coatings)
BS EN 13438 (Powder organic coatings)

Product Specification:

Manufactured: Machine welded from steel wire rod



PART CODE	'A' DIMENSION	'B' DIMENSION	'C' DIMENSION
MC106100	100	106	114
MC106150	150	106	164
MC106200	200	106	214
MC106300	300	106	316
MC106400	400	106	418
MC106450	450	106	468
MC106500	500	106	518
MC106600	600	106	618

Cable capacities:

MC30		APPROX CABLE CAPACITY UNDER NEC 50% RULE			
CABLE TRAY	TOTAL FILL AREA (mm ²)	NEC 50% RULE: ALLOWABLE FILL AREA (mm ²)	CAT 5e 4-pr UTP (4.9mm diam)	CAT 6 4-pr UTP (6.5mm diam)	CAT 6a 4-pr UTP (8.9mm diam)
MC106100	10303	5152	273	155	83
MC106150	15452	7726	410	233	124
MC106200	20600	10300	546	310	166
MC106300	30903	15452	819	466	248
MC106400	41200	20600	1092	621	331
MC106450	46348	23174	1229	698	373
MC106500	51503	25752	1366	776	414
MC106600	617800	30900	1639	931	497

Finishes:

EZ - Electro-Zinc

HDG - Hot-dip Galvanised

PG - Pre-Galvanised

PC - Powder Coated